

Certificate of Analysis

Product Name: DL-Normetanephine:HCL
(Isotopic Label & Enrichment Specification)

Lot Number: 2-RDE-173-2

Catalog Number: CMS-T110050

Product Solubility information: 25mg

Product Information

Chemical Purity Specification: 96%

Structure:

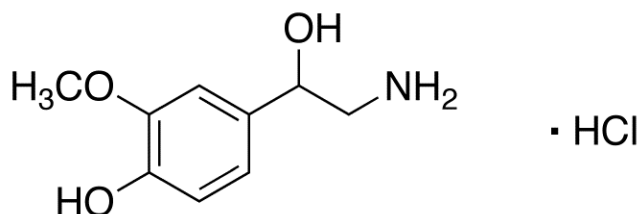
MW*: *For isotopically labeled compounds, MW listed is for the fully enriched product.

219.67

Labeled CAS Number: 1011-74-1

Chemical Formula: C₉H₁₄ClNO₃

Long Storage: -20 °C



Certification

Cmass guarantees that this material meets or exceeds the specifications stated. Absolute identity as well as chemical and isotopic purities are assured by the use of unambiguous synthetic routes and multiple chemical analyses whenever possible. Results are representative of QC testing at time of release from Quality Control unless otherwise stated. This COA references the bulk catalog number before packaging.

Approved by: Kilenky Stephen

Kilenky Stephen Quality Review

Additional Information

TLC Conditions: SiO₂; Dichloromethane : Methanol : Ammonium Hydroxide = 8 : 2 : 0.1; Visualized with UV and AMCS; Single Spot, R_f = 0.25.

¹H NMR and MS conform to structure.

Elemental Analysis: (Found) %C: 46.21, %H: 6.09, %N: 5.92; (Calculated) %C: 49.21, %H: 6.42, %N: 6.38

Chloride Content: 20.0%

Purity is based on the analytical results of the tests performed. NMR and TLC may have an accuracy of + / - 2%.

Isotopic purity is based on mass distribution observed.

QC Test Date

October 04, 2017

Retest Date

October 04, 2020